

Lot 77.

Homestead Map 14

N. Kona, Hawaii

Grant No. 6491

TO Makini

Date. Nov. 22 1915

Copy furnished Land office  
Nov. 9, 1915.

checked file in Cartm 15

Honolulu

Description of Lot 77 Map 14

~~Adjoining with Oahu's Homesteads~~ Kaulana Homesteads, Naha Kona, Hawaii.

Beginning at a point on pahoehoe rock marked with + and drill hole N 33° 53' E line 958 ft from the <sup>as shown on Homestead Map No. 1st office in the Office of the Government Survey, 2<sup>nd</sup> Trig Station, Kaulaaka</sup>, and running as follows:

N 33° 53' E line 912 ft. along Govt Remainder.

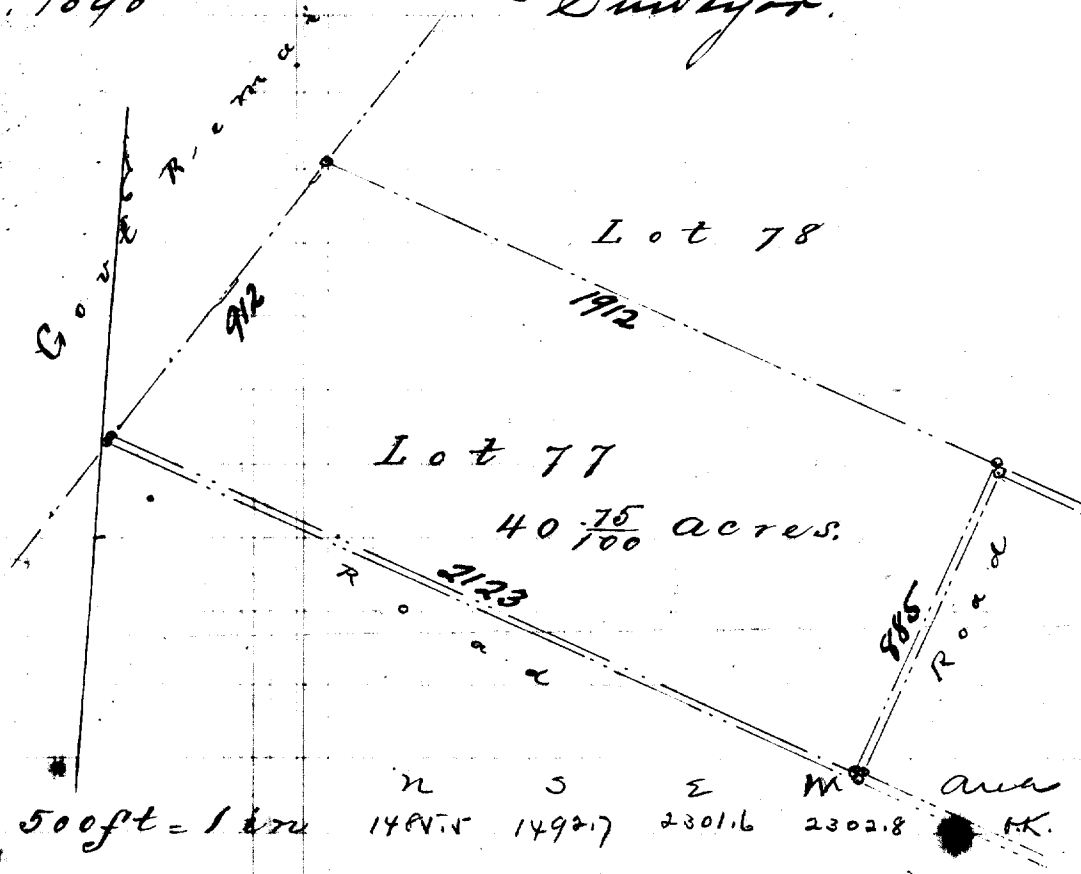
S 69° 42' E line 1912 ft along Lot 78.

S 20° 25' W line 885 ft along the edge of road as laid out

N 69° 56' <sup>110 04</sup> W line 2123 ft. along the same to initial point and including an area of 40 <sup>75</sup>/<sub>100</sub> acres.

Honolulu.  
June 23, 1890

Signed, J. S. Emerson  
Surveyor.



Scale 500ft = 1 in

n	s	e	m	area
1487.5	1492.7	2301.6	2302.8	HK.

*J.S.E.*

Newton (Jan. 1907)