

Lot 6B.
Hauvstead Map 14
Umbala. H. Kona
Hawaii.

Grant No.

TO

Date.

Copy furnished Land Office
August 30, 1917.

See C.S.F. 13491

Checked
file in Carton 15

One copy on des lead

Description of Lot 68.

~~Truncated Map 14~~
Kaulana Homestead
Suvaakaka, North Kona, Hawaii.

Beginning at a stone marked with + and drill hole, at ^{the Northwest corner} ~~the NW corner~~ of Lot 66 and ~~at~~ ^{N 85° 38' 27" true} ~~1347.5~~ ^{1347.5} ft from ~~the~~ ^{the} Trig Station Chukis, and running as follows by true bearings:—

N 79° 39' 27" true 814 ft, along ~~to~~ ^{to} 2022 (Puhilaolo) ~~to~~ ^{to} ~~the~~ ^{the} Northwest corner of Lot 70;

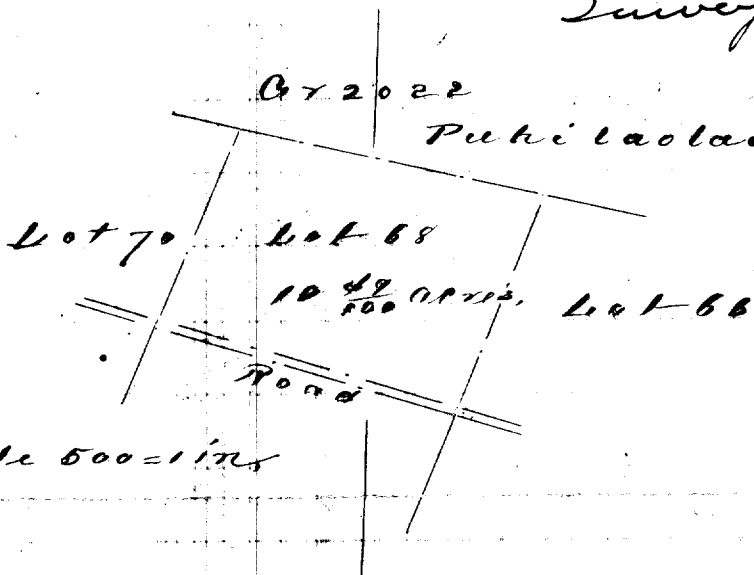
S 20 59 27 true 542 ft, along Lot 70;

S 75 35 E true 809 ft, along the edge of road as laid out

N 20 50 E true 599 ft, along Lot 66; to initial points and containing an area of 10 ⁴⁹/₁₀₀ Acres.

Honolulu
June 23, 1890

Signed J. S. Emerson
Surveyor.



Scale 500 = 1 in

V. M. S. W.

N	S	E	W	Area
706.0	707.0	994.6	994.9	OK

Newton (Jan. 1907)