

Lot No. 45  
Ahualoa Homestead  
Map. 18

Copy furnished Land Office  
Jan 23-1902

Grant No. 3846

TO Kaniu Lumakeihei  
Date.

Checked

File in Contm 72

DESCRIPTION OF LOT #45.

Ahualoa Homesteads Map No. 18.

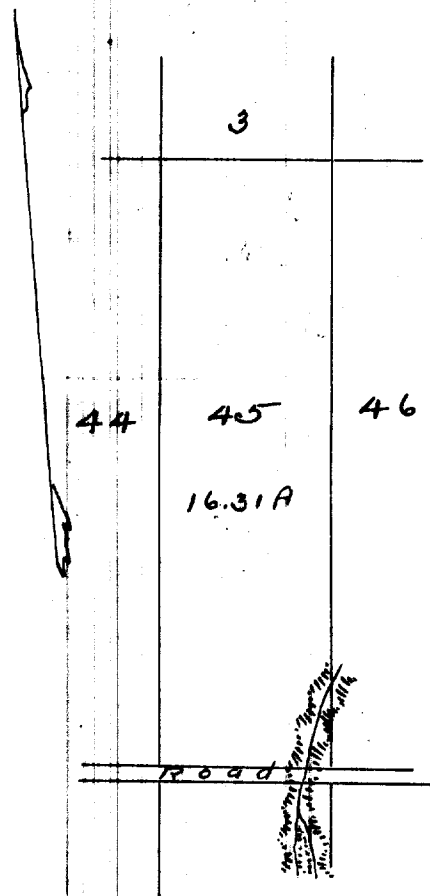
---o:0---

Beginning at a point which is 768.9 ft. S. and 8938.2 ft. E. from an iron pipe set in the ground at the N.W. corner of Homestead Lots Map No. 18- and running as follows:

- 1.- S. 4° 55' W. true 1580.0 ft. along Lot #44.
- 2.- S. 85° 05' E. " 450.0 ft. along Road.
- 3.- N. 4° 55' E. " 1580.0 ft. along Lot #46.
- 4.- N. 85° 05' W. " 450.0 ft. along Lot #3 Homestead Map No.2  
to point of beginning and containing  
an area of 16 31/100 acres.

W.A.Wall.

Oct. 14th. 1891.



Scale 500ft = 1 in