

Lot 39.

Homestead Map No 13.

Waiakoa.

Grant No. 7924

TO Lee Tai Hu

Date. Nov. 3, 1922

Copy furnished Land Office,

December 12, 1918.

File in Carton 6.

Checked

Lot 39
 Waiahoā Homestead
~~Homestead Map No. 13, Waiahoā, Kula, Maui.~~

Beginning at the ^{East} ~~N.E.~~ corner ^{of this lot,} at a stone marked Δ ; on the south side of a proposed road, as shown Homestead Map No. 13, on file in the office of the Survey Dept. and running by true bearings: -

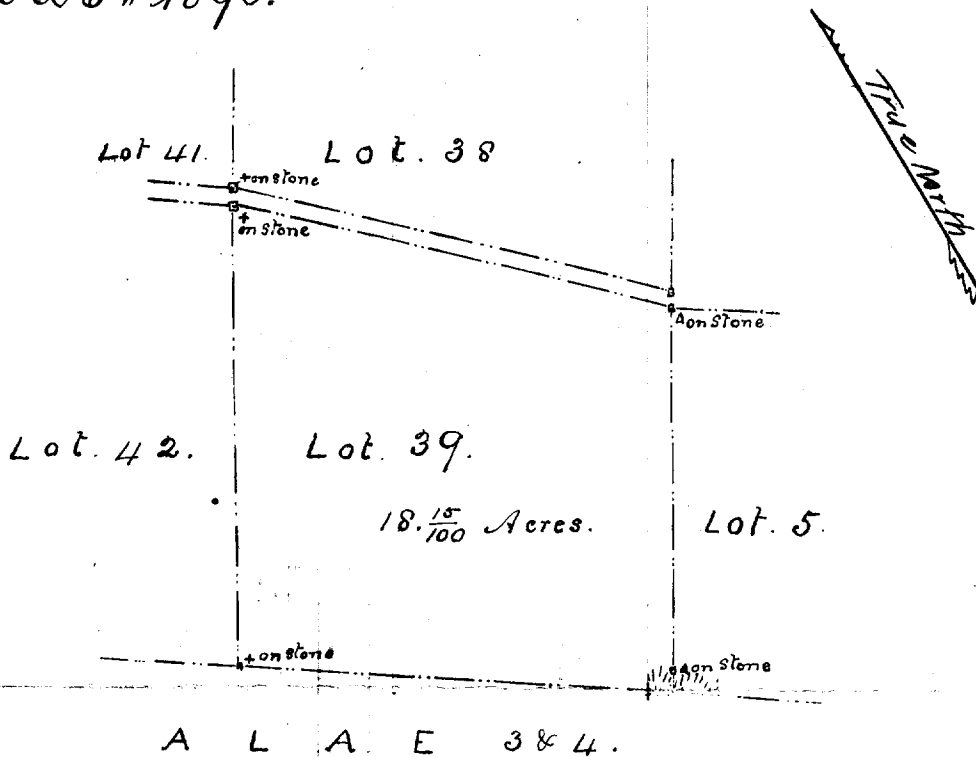
1. S. 30° 40' W. ~~(true)~~ 797 feet along Lot 5 to ^{boundary} line of Alae 384.
2. N. 55° 46' W. ~~(true)~~ 905 feet along Alae 384 to a stone marked +;
3. N. 30° 40' E. ~~(true)~~ ⁹⁶¹ ~~958~~ feet along Lot 42 to a stone marked + on the south edge of the proposed road;
4. S. 45° 36' E. ~~(true)~~ 932 feet along the proposed road to the point of beginning; ~~and containing~~ ~~an area of~~ $18 \frac{15}{100}$ Acres.

76	S	E	W	area
1334.6	1337.6	1337.6	1153.1	64K

76 ~~1334.6~~ - Dec. 1906)

Surveyed by E. D. Baldwin
 Asst Gov't Survey.

Dec 3rd 1890.



Scale 400ft = 1 inch.