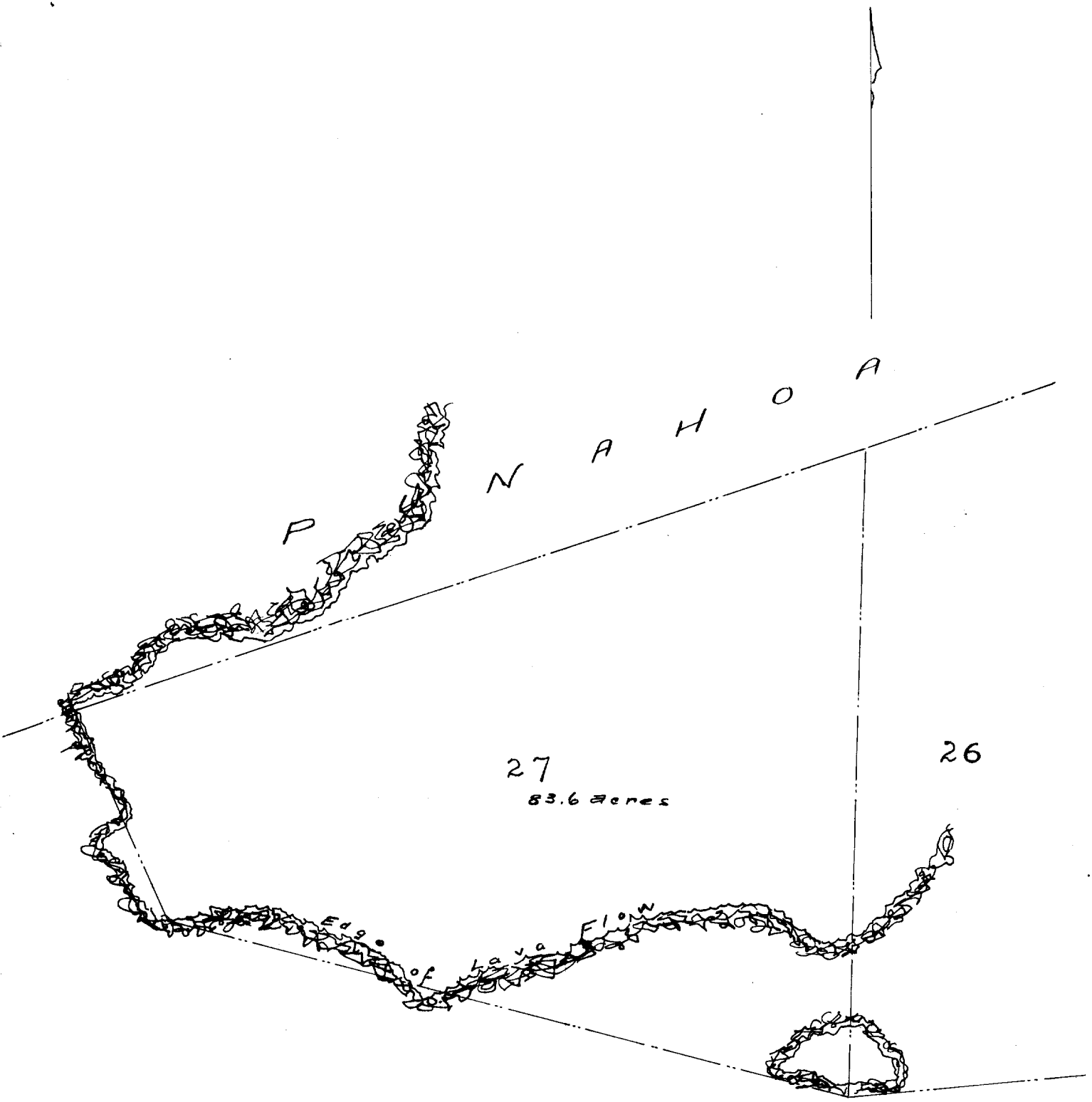


Lot 27
Ponakawai Gout. Lots,
Hilo, Hawaii

File in Carton 125.



Scale 500ft = 1m.

PONAHAWAI, HILO, HAWAII, GOV'T. LOTS.

LOT #27.

Notes of Survey:-

Beginning at South angle lot #26 at pile of stones on lava alongside of which have been cut the figures ~~26~~/-27 in the rock the boundary runs by true bearings:

- 1.- ^NS. 75° 35' W. 2565 ft. to pile of stones.
- 2.- N. 24° 32' W. 838 ft. along edge of woods to West angle at extreme upper point of woods where cut off by the lava at intersection with boundary of Punahoa 2nd. R.P. 1624 this corner marked by a large pile of stones from which the Haw'n. Gov't. Survey Ref. Pt. "Waihimanalue" bears. distant feet.
- 3.- N. 71° 30' E. 3066 ft. along Punahoa 1st. R.P. 1624 to post ~~27~~/26 at North angle lot #26.
- 4.- S. 2° 00' W. 2374 ft. along lot #26 to the point of beginning.

Containing 83.6 acres.

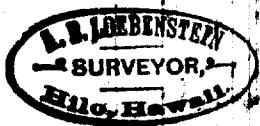
(Sgd.) A.B.Loebenstein. Surveyor Bureau Public Lands.

Hilo, Jan. 27th. 1896.

Puehala, Hilo, Hawaii Div. Lts

L1-27

Notes of Survey



File in Carton 125.

Pohouai, Hilo, Hawaii. Gov't Lots.

Lot # 27.

Notes of Survey

Beginning at South angle lot # 26 at pile of stones
on low slope of which have been cut the figures 26+27 in the rock
the boundary runs by true bearings

1 - N 75° 35' W - 2565 ft. to pile of stones

2 - N 44° 32' W - 833 . along edge of woods to West angle at extreme
upper point of woods where cut off by the lava
at intersection with boundary of Panchoa 2^d

R.P. 1624, this corner marked by a large
pile of stones from which the Heiau North Survey
Ref. Pt. "Waibimouelue" bears
distant feet.

3 - N 71° 30' E - 3066 . along Panchoa 1st R.P. 1624 to pt 27/26
at North angle lot # 26

4 - S 2° 00' W - 2374 . along lot # 26 to the point of beginning
A.B. Lobenstein, Surveyor Bureau Public Lands

Hilo January 27 - 1896

N.B. Full area 98.2 Ac.
Exclusive of open bare lava. 83.6