

Lot. 22.
Nihoa & Waialeale, Kau.
Homestead Map. 17.

Grant No.

TO

Date.

File in Carton 1.

Description of Lot 22.

Ninole and Wailou, Kaw, Homestead Map, 17

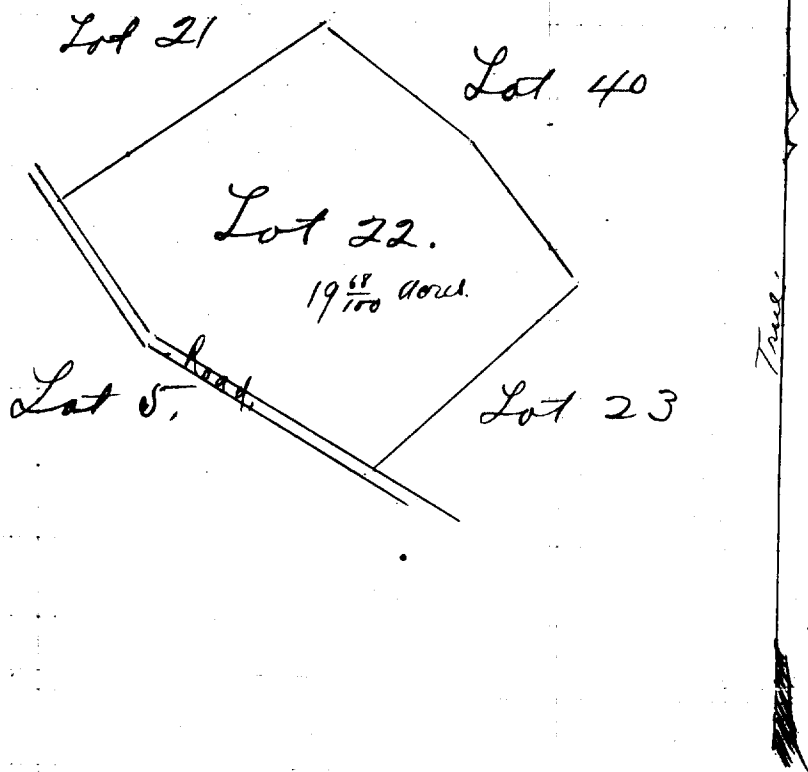
Beginning at a point which is 12485 feet North and 15222 feet West from Cook, Surrey Station Pulpw and running as follows.

1. S. 52° 48' E true 490 feet along Lot 40
- * 2. S. 37° 31' E " ~~465~~ " " " 40
3. S 47° 45' W " 713 " " " 23
- * 4. N ~~53° 53'~~ ⁵⁷⁻³⁰ W " 655 " " " Roads.
5. N 36° 10' W " 437 " " "
6. N 55° 47' E " 820 " " Lot 21 to initial point and containing an area of 19 ⁶⁸/₁₀₀ Acres.

Aug. 20th 1892.

W. A. A. A.

* Changed by Newton ~~March 1907~~ ^{July 1913} to agree with working sheet.



Scale 500 feet = 1 inch

N	S	E	W	area
1146.3	1144.5	1351.6	1350.1	19.4 ac.
Newton - July 1913.				