

Lat. 19.
Alhualco Homestead
Map No. 18

Copy furnished Land Office
Jan. 23-1902

Grant No. 4572

TO K. Fugitani
Date.

Copy

Checked

File in Contm 72

DESCRIPTION OF LOT #19.

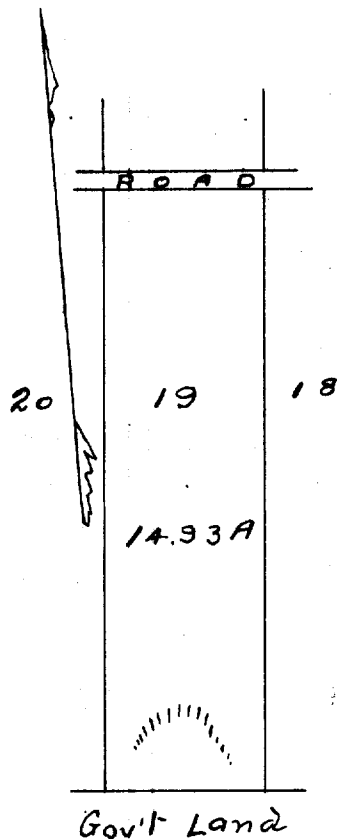
Ahualoa Homestead Map No. 18.

---0:0---

Beginning at a point which is 1794.1 ft. South and 1942.2 ft. E. from an iron pipe set in the ground at the N.W. corner of ^{Lots,} Homestead Map No. 18 and running as follows:-

- 1.- S. 4° 55' W. true 1580.0 ft. along Lot #18.
 - 2.- N. 85° 05' W. " 411.6 ft. along Gov't.
 - 3.- N. 4° 55' E. " 1580.0 ft. along Lot #20.
 - 4.- S. 85° 05' E. " 411.6 ft. along Road to point of beginning
- and containing an area of 14 93/100 Acres.

W.A.Wall.
Oct. 15th. 1891.



Scale 500ft = 1 in