

Lot 15.
Kahuku, Hills
Map 10.

Grant No. 4879

TO Antonio F. Gil
Date.

Copy furnished Land Office
Feb. 21st. 1905.

File in Carton 108.

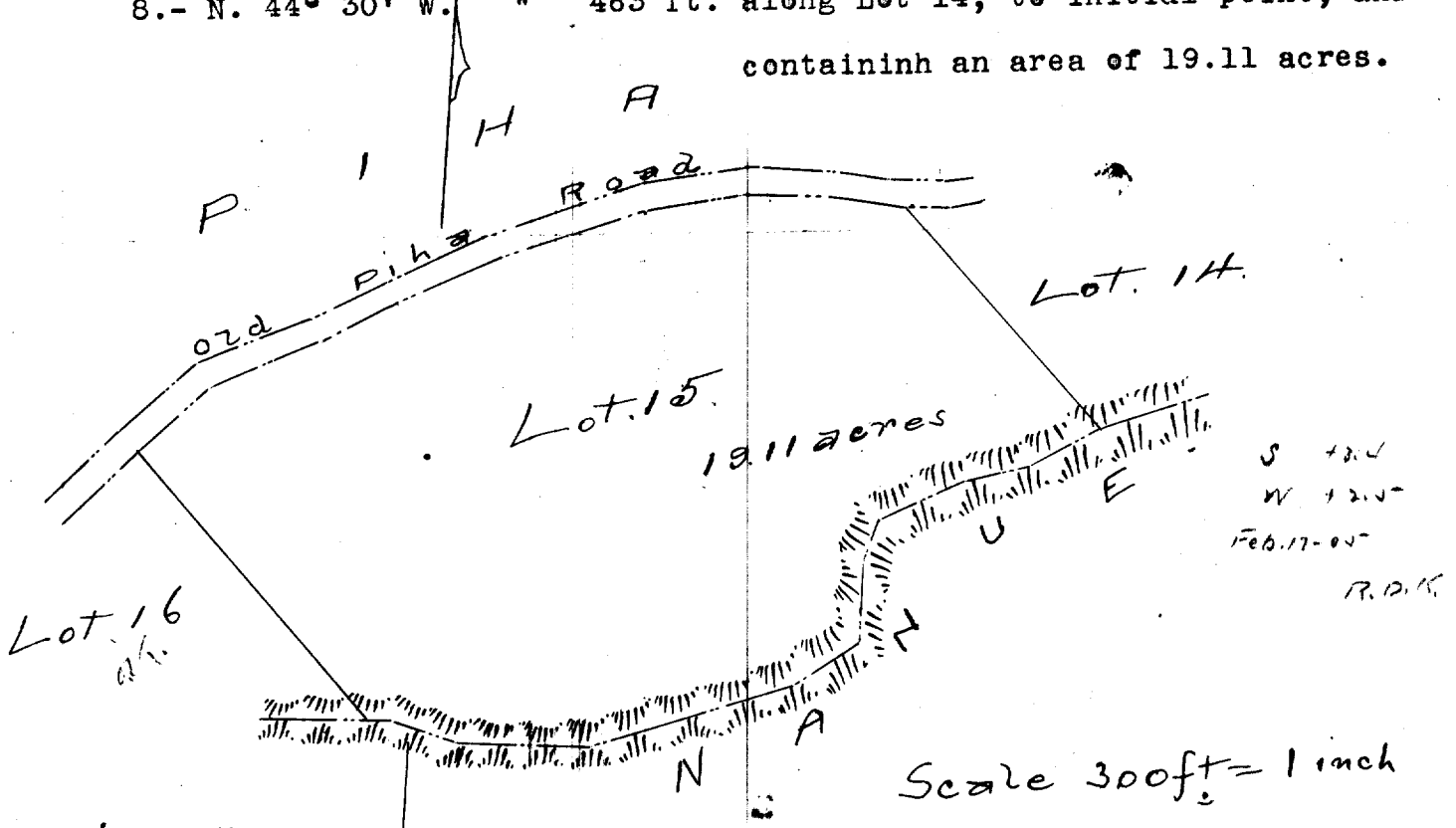
DESCRIPTION OF LOT 15: HOMESTEAD MAP 10.

KAHUKU, HILO, HAWAII.

---●---

Beginning at a point on South side of road being West
of Lot 14, 6808 ft. West 4385 ft. South of Kahuku Trig Station and
running as follows:-

- 1.- S. 68° 40' W. true 1277 ft. across this lot, the line of road
being the boundary.
- 2.- S. 44° 30' E. " 557 ft. along Lot 16.
- 3.- S. 86° 25' E. " 362 ft. along Nanue, the middle of Waiehu
Gulch being the boundary..
- 4.- N. 69° 40' E. " 331 ft. along middle of Waiehu Gulch.
- 5.- N. 53° 22' E. " 125 ft. along the same.
- 6.- N. 5° 0' E. " 198 ft. along Nanue, the middle of Waiehu
Gulch being the boundary.
- 7.- N. 64° 10' E. " 373 ft. along Nanue, the middle of Waiehu
Gulch being the boundary.
- 8.- N. 44° 30' W. " 463 ft. along Lot 14, to initial point, and
containinh an area of 19.11 acres.



Description of Lot 15.
Homestead Map 10.
Kahuku Hills, Hawaii.

Beginning at a point on south side
of road being West 1 of Lot 14, 6808 ft West
4585 ft south of Kahuku Trig Station
and running as follows:

- 1 S 68 40 W true 1277 ft. across this lot, the
line of road being the bound-
ary;
- 2 S 44 30 E true 557 ft. along Lot 16;
- 3 S 86 25 E true 362 ft., along Naniue, the
middle of Waiehu gulch
being the boundary;
- 4 N 69 40 E true 331 ft., 331 ft. along middle
of Waiehu gulch;
- 5 N 53 22 E true 125 ft. along the same;
- 6 N 5 0 E true 198 ft. along Naniue the mid-
dle of Waiehu gulch being
the boundary;
- 7 N 64 10 E true 373 ft. along Naniue, the mid-
dle of Waiehu gulch being
the boundary;
- 8 N 44 30 W 463 ft. along Lot 14, to
initial point, and con-
taining an area of 19.11
acres.