

Map 4 Art 14  
Homestead Lot 14

Map. 4

Hanalei, Hawaii

Grant No. 3774

TO J. W. Haena  
Date.

Copy furnished Land Office

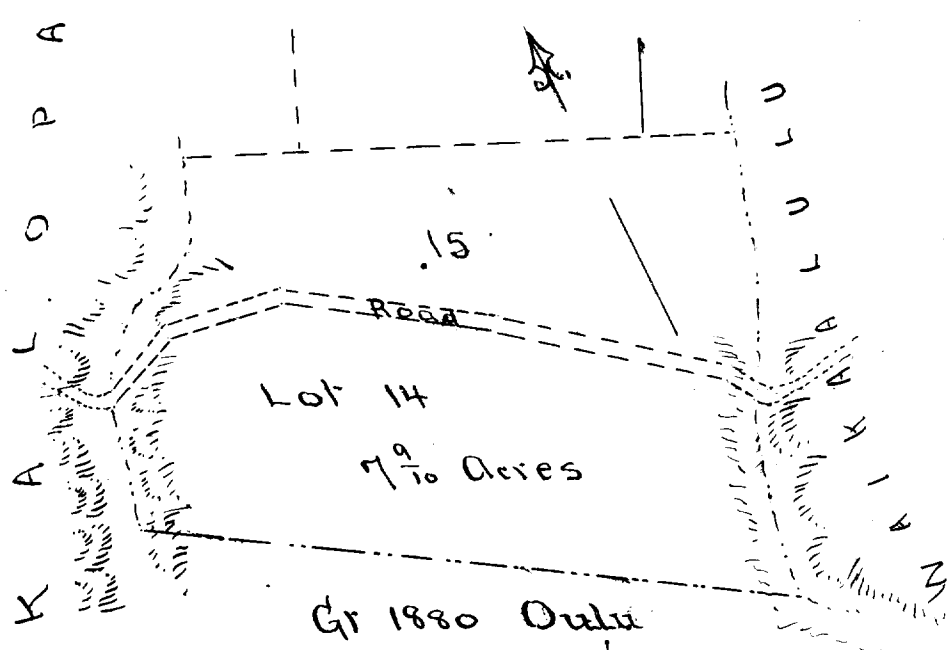
May 14<sup>th</sup> 1895.

Description of Homestead Lot 14. Map. 4  
in Papalele. Hamakua. Hawaii

Beginning at marked Kukui tree mauka side of Govt road  
in middle of gulch separating lands of Papalele & Waikahalulu,  
thence the boundary runs by true bearings:

- S 14° 45' W 140 feet along middle of gulch
- S 10° 45' W 180 .. .. .
- N 58° 40' W 1040 ft along Grant 1880 (Oulu) to rock  
mtd's in middle of gulch between  
Papalele and Kalopa.
- N 12° 15' E. 195 ft along middle of gulch to pt on mauka side  
of Govt road.
- N 63° 30' E 140 .. .. mauka side of Govt road
- S 77° 56' E 57 .. .. .
- S 83° 10' E 126 .. .. .
- S 59° 5' E 145 .. .. .
- S 55 57' E 180 .. .. .
- S 53° 15' E 382 .. .. .
- S 30° 00' E 55 .. .. . to Initial pt

Area 7<sup>9</sup>/<sub>10</sub> Acres.  
J. S. Brown  
May 16<sup>th</sup> 1895.



Sc 300 ft to inch.