

Lot No. 7
Trust Map No. 12
Kaunakakai, Hawaii

Grant 3775
Kato Soshuro

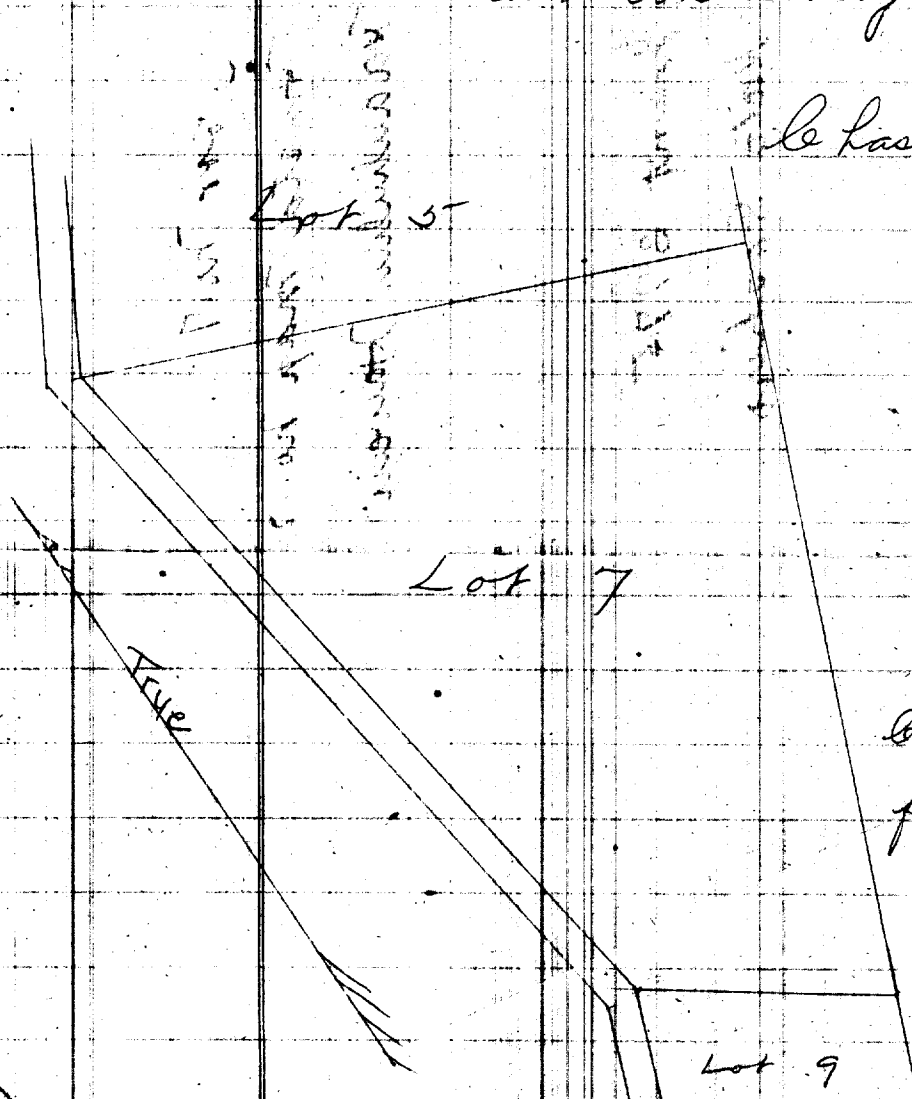
File in Contm 75

Grant 3775 to Kato Soshiro
June 21-1895

Description of Lot No. 7
Homestead Map No. 12
Kaaunahu, Hamakua, Hawaii

Beginning at the N.E. corner of this lot
being also the S.E. corner of Lot 5 and running as follows:

S 22°-28' N true 800 feet to a sunken rock marked ↓
N 55-40 W " 273 ft along Lot 9;
N 8-36 W " 865 ft along the reserved road;
S 67-55 E " 712 ft along Lot 5 to initial point.
and containing an area of $8\frac{6}{10}$ acres.



Lehas Notley Jr.
Surveyor.

Copied from original paper,
filed in the Land Office.

Scale 1 in = 200 ft