

Lot 4
Kaluku, Hilo
Map 10.

Grant No. 4933

TO Manuel Vieira
Date.

Copy furnished Land Office
Jan. 10, 1906.

File in Carton 108.

DESCRIPTION OF LOT 4. HOMESTEAD MAP 10.

KAHUKU, HILO, HAWAII.

---000---

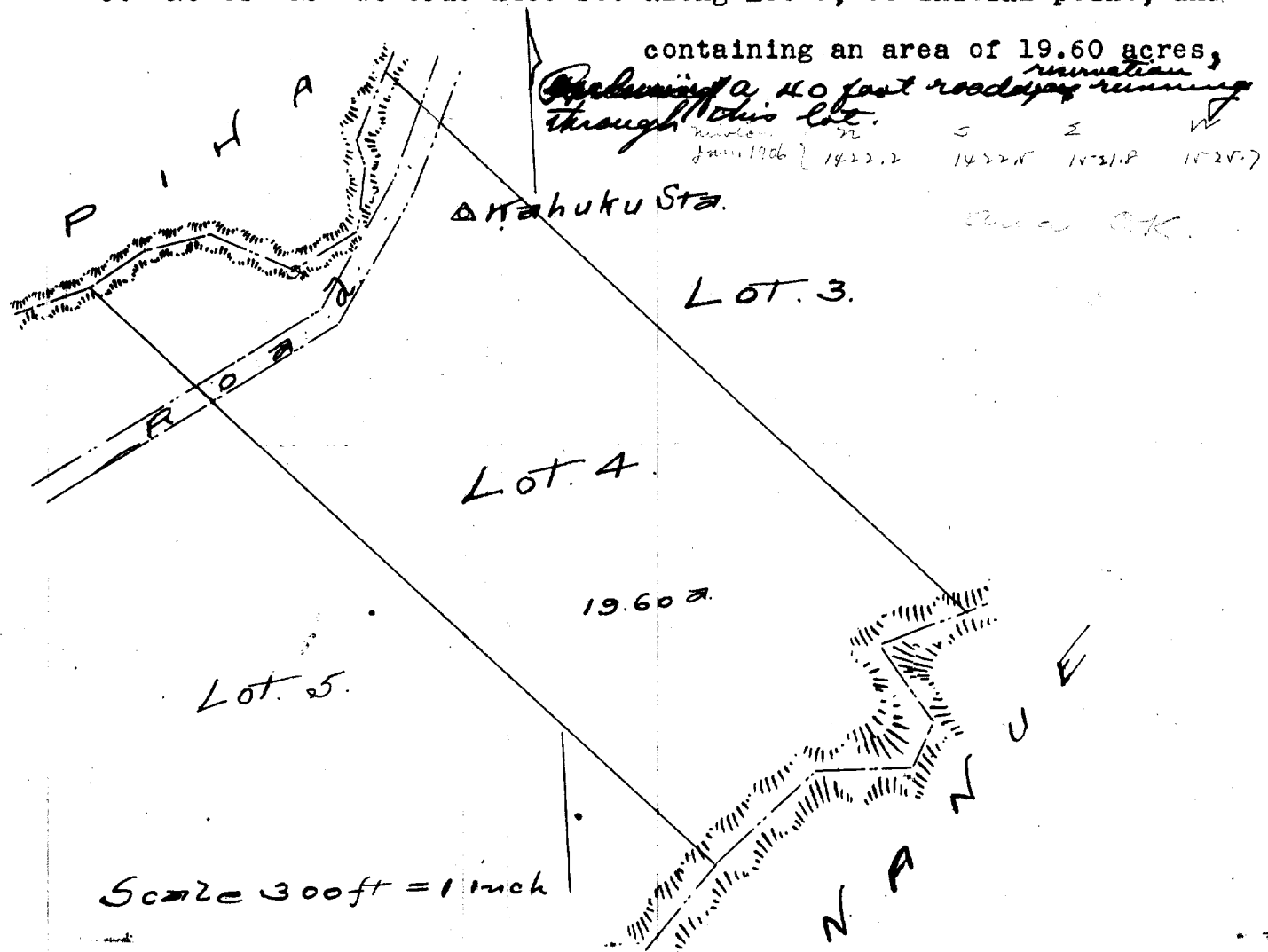
Beginning at a point in middle of Alenaio Gulch, being the W. corner of Lot 3. 123 ft. W. and 256 ft. North of Kahuku Trig Station, and running as follows:-

1. S. 28° 20' W. true 385 ft. along Piha, the middle of Alenaio Gulch being the boundary.
2. S. 87° 44' W. true 362 ft. along Piha, the middle of Alenaio Gulch being the boundary.
- 3.- S. 44° 30' E. true 1500 ft. along Lot 5.
- 4.- N. 48° 0' E. true 633 ft. along Nanue, the middle Waiehu Gulch being the boundary.
- 5.- N. 44° 30' W. true 1400 ft. along Lot 3, to initial point, and

containing an area of 19.60 acres,

including a 40 foot roadway running through this lot.

Jan 1906 } 1423.2 1422.8 1421.8 1420.7



Description of Lot 4.

Homestead Map 10-

Kahuku, Hilo, Hawaii.

Beginning at a point in middle of Alenais gulch, being the N. corner of Lot 3, 123 ft West and 256 ft North of Kahuku Trig Station, and running as follows.

- 1 S 28 20 W true 385 ft. along Piha, the middle of Alenais gulch being the boundary;
- 2 S 87 44 W true 362 ft along Piha, the middle of Alenais gulch, being the boundary;
- 3 S 44 30 E true 1500 ft along lot 5;
- 4 N 48 0 E . 633 ft. along Nanue, the middle of Naiehu gulch being the boundary;
- 5 N 44 30 W true 1400 ft along Lot 3, to initial point, and containing an area of 19.60 acres.

(Less width of road)