

Lot. 3.
Kahuku, Hills
Map. 10.

Grant No. 4932

TO *Johnne Vieira*
Date.

*Copy furnished Land Office
Jan. 10, 1906.*

File in Carton 108.

DESCRIPTION OF LOT 3. HOMESTEAD MAP 10.

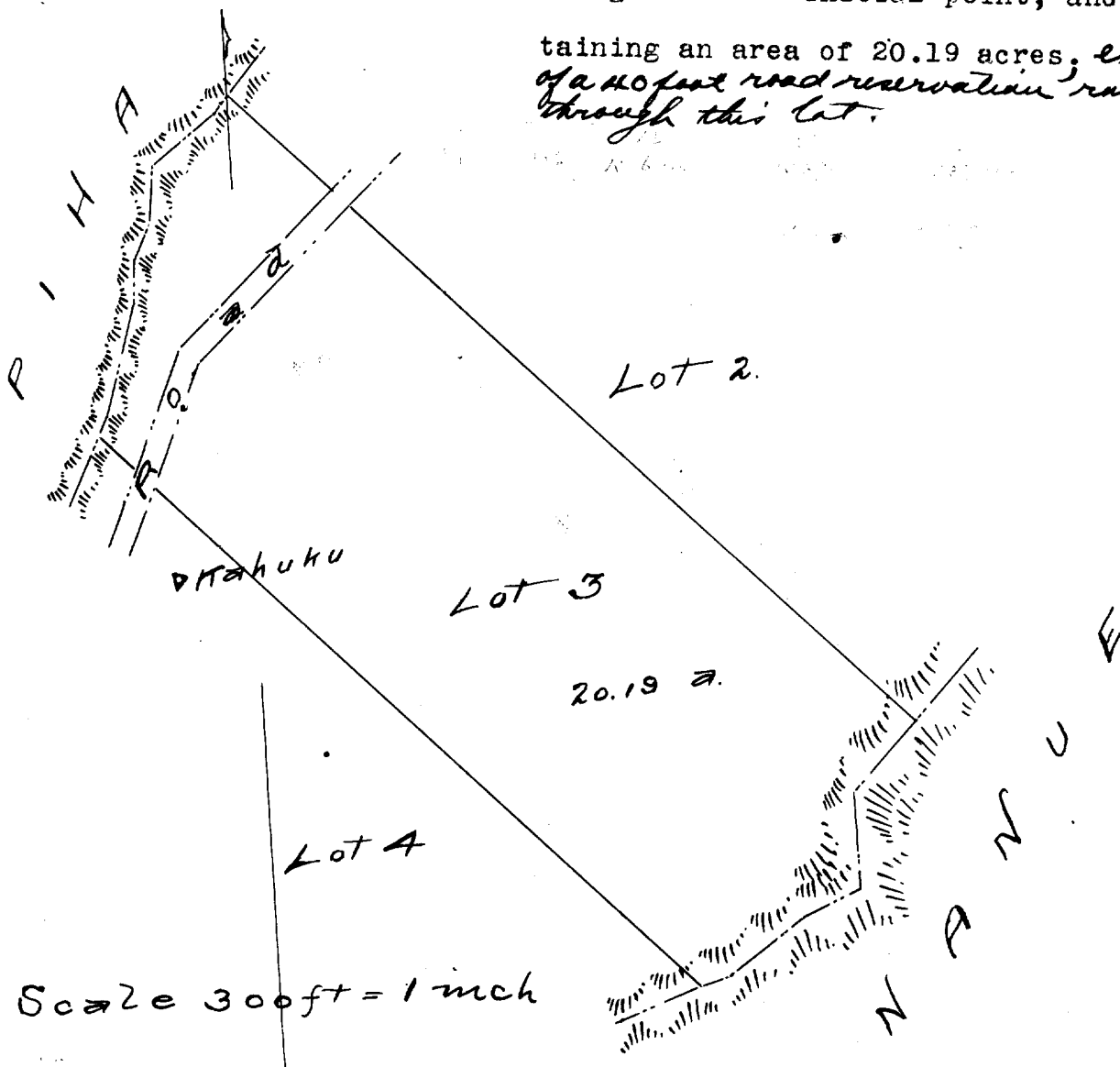
KAHUKU, HILO, HAWAII.

---c0o---

Beginning at point in Alenaio Gulch, being the West corner of Lot 2. which is 828 ft. North, and 134 ft. East of Kahuku Trig Station, and running as follows:-

- 1.- S. 24° 5' W. true 625 ft. along Piha, the middle of Alenaio Gulch being the boundary.
- 2.- S. 44° 30' E. 1400 ft. along Lot 4.
- 3.- N. 42° 5' E. 582 ft. along Nanue, the middle of Waiehu Gulch being the boundary.
- 4.- N. 44° 30' W. 1592 ft. along Lot 2 to initial point, and con-

taining an area of 20.19 acres, exclusive of a 40 foot road reservation running through this lot.



Scale 300 ft = 1 inch

Description of Lot 3,
Homestead Map 10,
Kahuku, Hilo, Hawaii.

Beginning at a point in Menai'o Gulch,
~~being the point~~ ~~corner~~ of Lot 2, which is 8.28 ft North and 134 ft East of Kahuku
 Trig Station, and running as follows:

1 S 24 15 W true, 625 ft, along Pihā, the
 middle of Menai'o gulch
 being the boundary;

2 S 44 30 E " 1400 ft along Lot 4's

3 N 42 5 E " 582 " along Nānue, the
 middle of Waiehu gulch
 being the boundary;

4 N 44 30 W " 1592 ft along Lot 2's
 initial point, and con-
 taining an area of
 20.19 acres.

(See width of road.)