

KAUNAKAKAI

KAMILOLOA (GOVT.)

Pipe 1800.0 302°-58'-10" 3708.75 Stake 1908.75 Stake

LOT "A"

LOT "B"

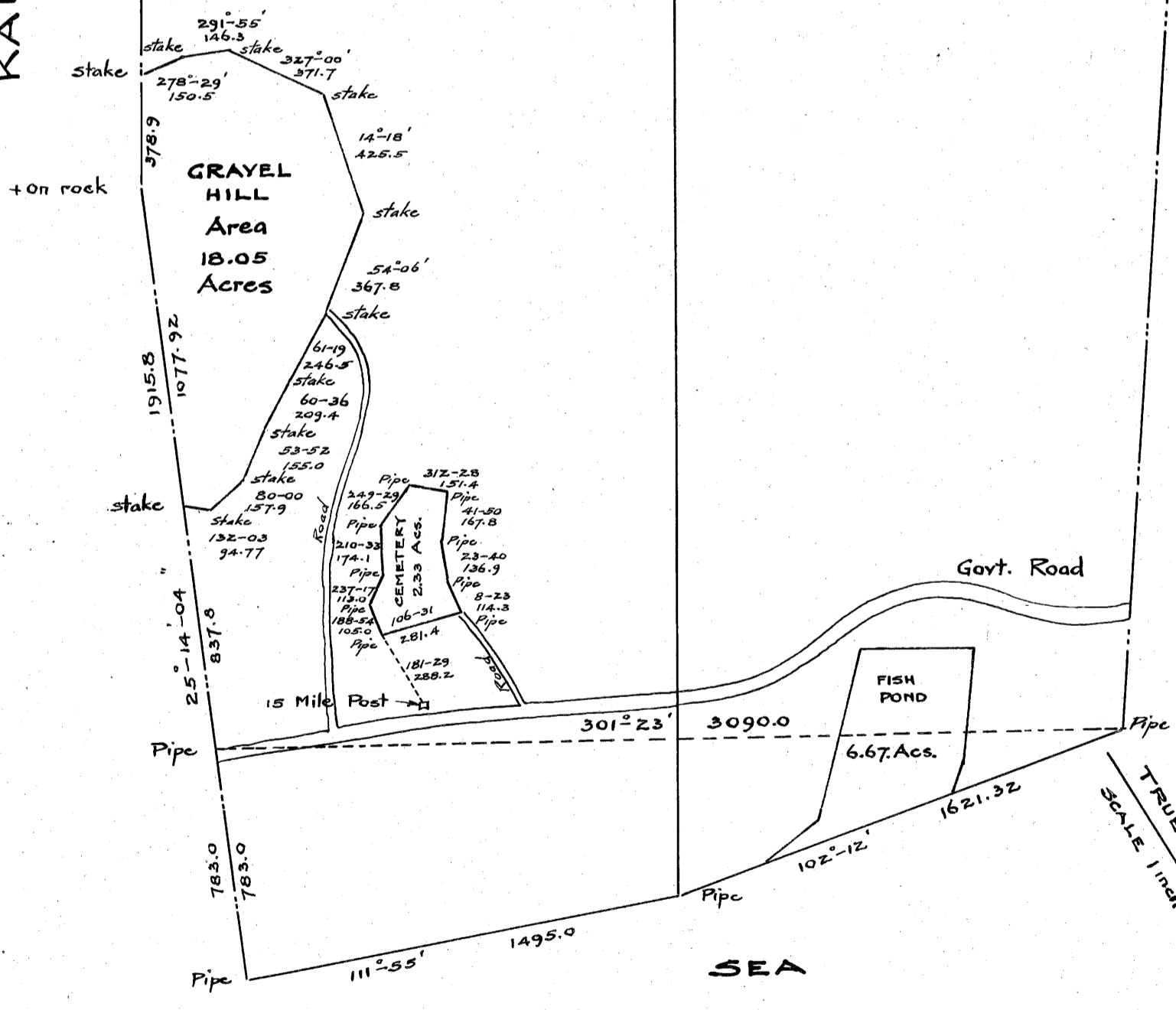
4310.0  
212°-58'-09" Stake 3931.1

6697.00  
32°-42' Stake

6133.59  
36°-21' Stake

Area = 275.14 Acres Gross  
Reserved = 22.70 " " " " " "  
252.44 " Net

Area = 250.91 Acres Gross  
Reserved = 8.14 " " " " " "  
241.77 " Net



TRUE NORTH  
SCALE 1 inch = 500 feet

HAWAIIAN HOMES COMMISSION  
LOTS "A" & "B" LOWER SECTION - KAPAAKEA  
ISLAND OF MOLOKAI  
Survey and Map by Chas. S. Reid