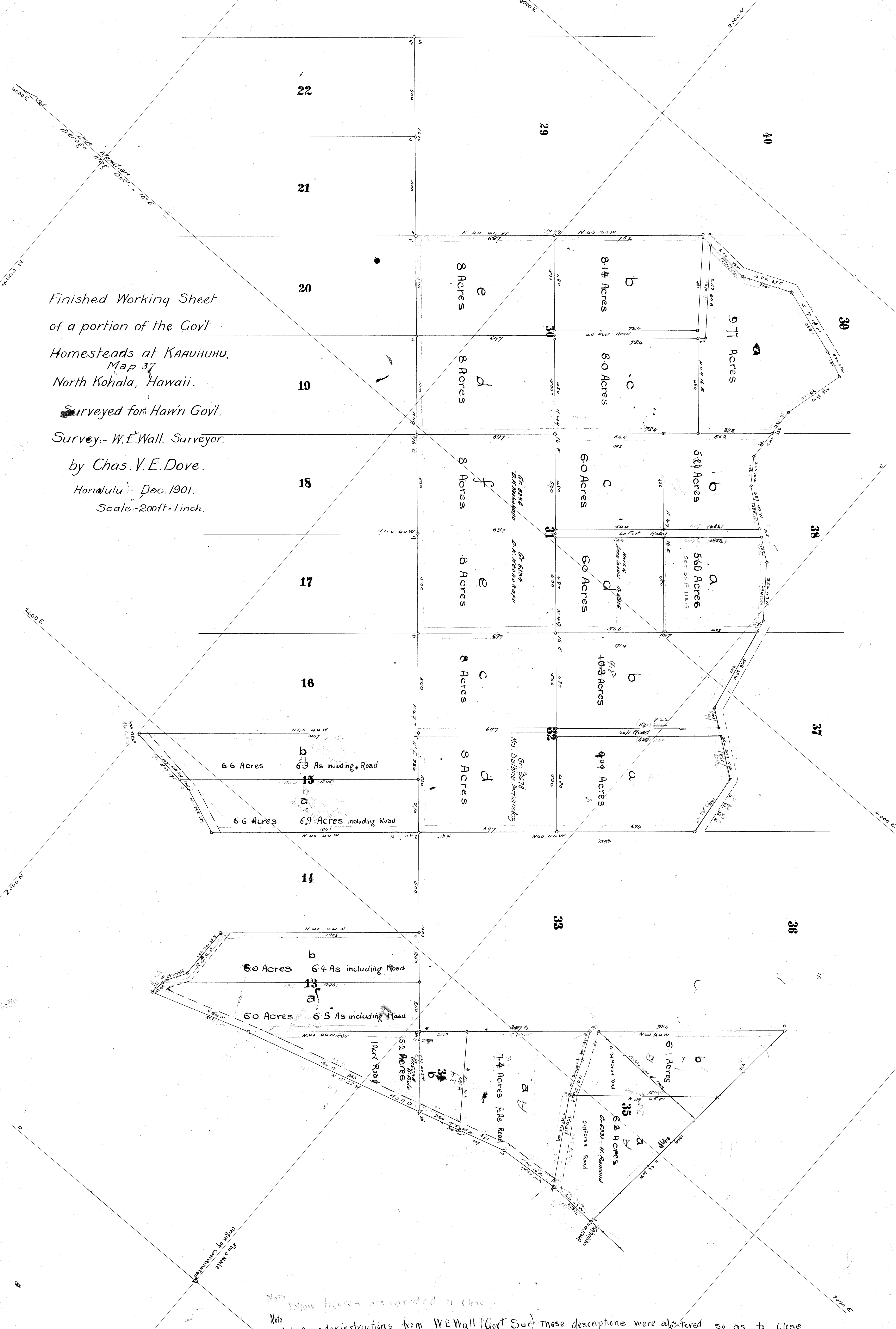


Finished Working Sheet
of a portion of the Govt
Homesteads at KAAHUHU,
Map 37
North Kohala, Hawaii.
Surveyed for Haw'n Gov't.
Survey: - W.E. Wall, Surveyor.
by Chas. V. E. Dove.
Honolulu: - Dec. 1901.
Scale: - 200ft = 1 inch.



Note Yellow figures are corrected to close

Note Acting under instructions from W.E. Wall (Govt Sur) these descriptions were altered so as to close.